

Precision Balance 6

HANS JENEMANN

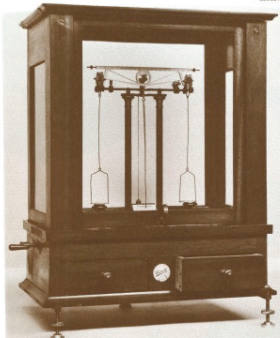


FIG 1.

This assay balance was made around 1910 by the Bosch Brothers in Jungingen in the Swabian Alps (near Sindelfingen, the venue of ISASC Convention 1983). It has no special mechanical features, but stands out because of its elegant styling, made with two columns and filigree work on the beam.

The beam has a length of 160mm (6.3") and is graduated along the top from 0 to 10, on both arms, readable to 0.1g. However, there is no mechanical system for positioning a rider weight. Perhaps the rider was positioned by hand. The balance has a parallel arrestment, operated by a crank on the left side of the case (similar to the example by Bunge, EQM p289). There are two arrestment rods moving inside the two hollow columns. At the front, there is the usual pointer and graduated arc to indicate the inclination of the beam, and behind it, a plumbline for levelling the balance. The maximum capacity may have been 20 or 30 grams, with a sensitivity of 0.05 mg, or a little better.

The dimensions of the case are 340 x 200 x 460mm high (13.4" x 7.9" x 18.1"). There are no side doors, the case being opened by the sliding window at the front. There are two drawers for weights and analytical accessories.

664

Author Jenemann, H.R.

Title Precision Balance 6 [Gebrüder Bosch]

In Equilibrium, 2 (1984), pp. 664-665

Size 2 pp., ill., 20.8 x 27.8 cm

Publisher ISASC International Society of Antique Scale Collectors

Place Chicago

Year 1984

ISBN ISSN 0893-2883

Abstract

Remarks